

We're continuing to enjoy a growing, varied and challenging workload. In fact, as you will see below, we've increased our turnover and headcount by 15% over the past 12 months! There are always challenges of course; it's finding commercial solutions to them that takes skill! If you'd like to get our expert view on any particular issues you have, please do get in touch, we'd love to help.

With very best wishes

John Pavey
Executive Director

clarkebond

MULTIDISCIPLINARY ENGINEERING CONSULTANTS

AUTUMN
2015

A ROUND UP OF THE LATEST NEWS FROM CLARKEBOND.

OVERCOMING DESIGN CHALLENGES OF 1970S OFFICE REFURBISHMENT

From tired 1970s office and warehouse to premium office accommodation. The new occupants of Narrow Quay House will be enjoying light, airy, high quality, open plan, modern offices with integrated high spec services and many design features incorporated to enhance their working environment, with no idea of the engineering challenges that had to be overcome to create the new space. [More](#)



"The credibility of the Clarkebond team was a great asset! They gave us the strength to stand firm, even under fire. We never wavered because we believed and saw the approach you were taking and how it hung together. Thanks."

Ed Delate, Vice President, Engineering, Keystone Foods LLC

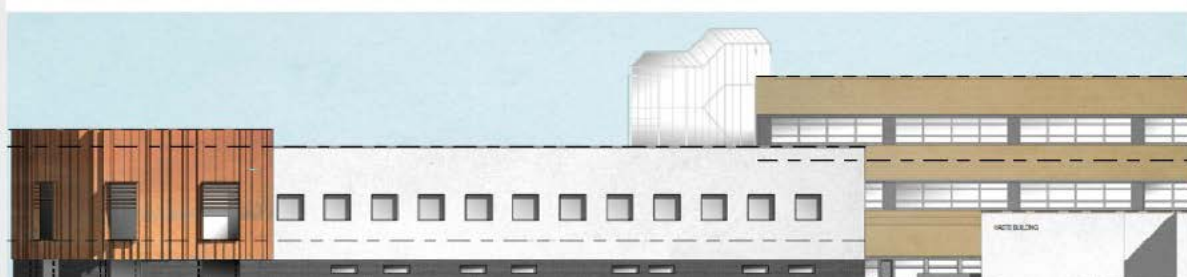


SINKHOLES, SPRINGS AND STEEP SLOPES – ALL IN A DAY'S WORK FOR RESI DEVELOPER TEAM!

As developers strive to keep pace with housing demand, even the most challenging sites are being brought forward for development. "Our experience in working with residential developers combined with our technical expertise gives us an ability to develop realistic, pragmatic and commercial solutions." [More](#)

CLARKEBOND APPOINTED TO ROYAL SURREY HOSPITAL SCHEME

Clarkebond has been appointed to provide civil and structural engineering services on a multi-million pound development of the Royal Surrey County Hospital near Guildford. [More](#)



FIRST DEVELOPMENT ON BATH AND WEST SHOWGROUND SITE GETS APPROVAL

An application to build a new free school in the new Enterprise Area being created on the Bath and West Showground has been approved. Clarkebond's cost effective, flexible layout and quickly buildable solution met the brief and tight budget on this challenging site. [More](#)

CONSTRUCTION OF STUDENT ACCOMMODATION TO START ON FORMER COUNCIL DEPOT SITE

The construction of a 104 unit student accommodation building is to start on the site of a former council depot and Territorial Army hall. Clarkebond have provided site investigations, remediation strategy for an underground fuel tank discovered during the investigation, and structural engineering services on the scheme. [More](#)



NO DRAMA AS CURTAIN GOES UP ON BRISTOL GRAMMAR PERFORMING ARTS CENTRE

The construction of a stunning new performing arts centre being built at Bristol Grammar School reached a key stage in September with the erection of the steel frame. The centre features a new build auditorium, foyer, dance studio, scenery dock behind the stage area and associated plant and welfare facilities. [More](#)

DEVON VISITOR ATTRACTION SET FOR EXPANSION

A centre of excellence in the field of donkey care in Sidmouth, East Devon, is set to develop its facilities even further following planning approval. The plans is to develop a range of new buildings and outdoor space and new veterinary hospital. [More](#)



CLARKEBOND MOVES UP BUILDING MAGAZINE'S TOP 150 CONSULTANTS LIST

Last year Clarkebond was ranked as one of the fastest growing consultants in the country in Building Magazine's Top 150 Consultants list and has moved up yet another 10 places in the recently published 2015 Consultants List. [More](#)

TIME FOR A CAREER MOVE?

Clarkebond is expanding and has ambitious plans for future growth. We have a number of vacancies across all offices and are always open to speculative approaches from talented, motivated individuals. Please get in touch. [More](#)

clarkebond

If you'd like to know more about any of the above or Clarkebond's services, please get in touch.

Tel: 0117 929 2244
www.clarkebond.com



[Twitter](#) [LinkedIn](#) [Email](#)